



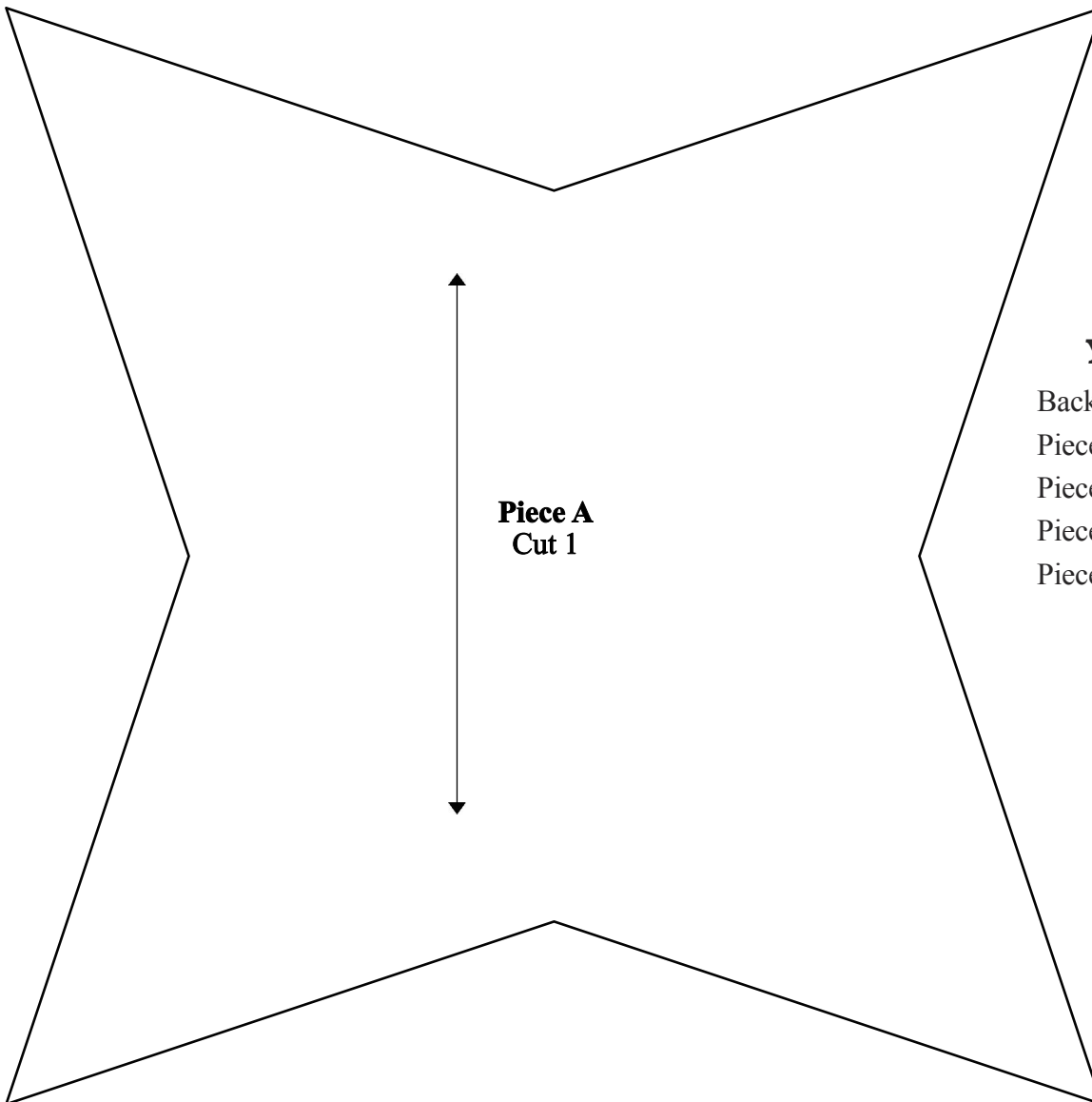
1720 Adams Avenue, Costa Mesa, California 92626  
Phone: (714) 641-3112 Email: mail@piecemakers.com

# Blooming Star

Pattern of the Month  
June 1983 (revised 2022)

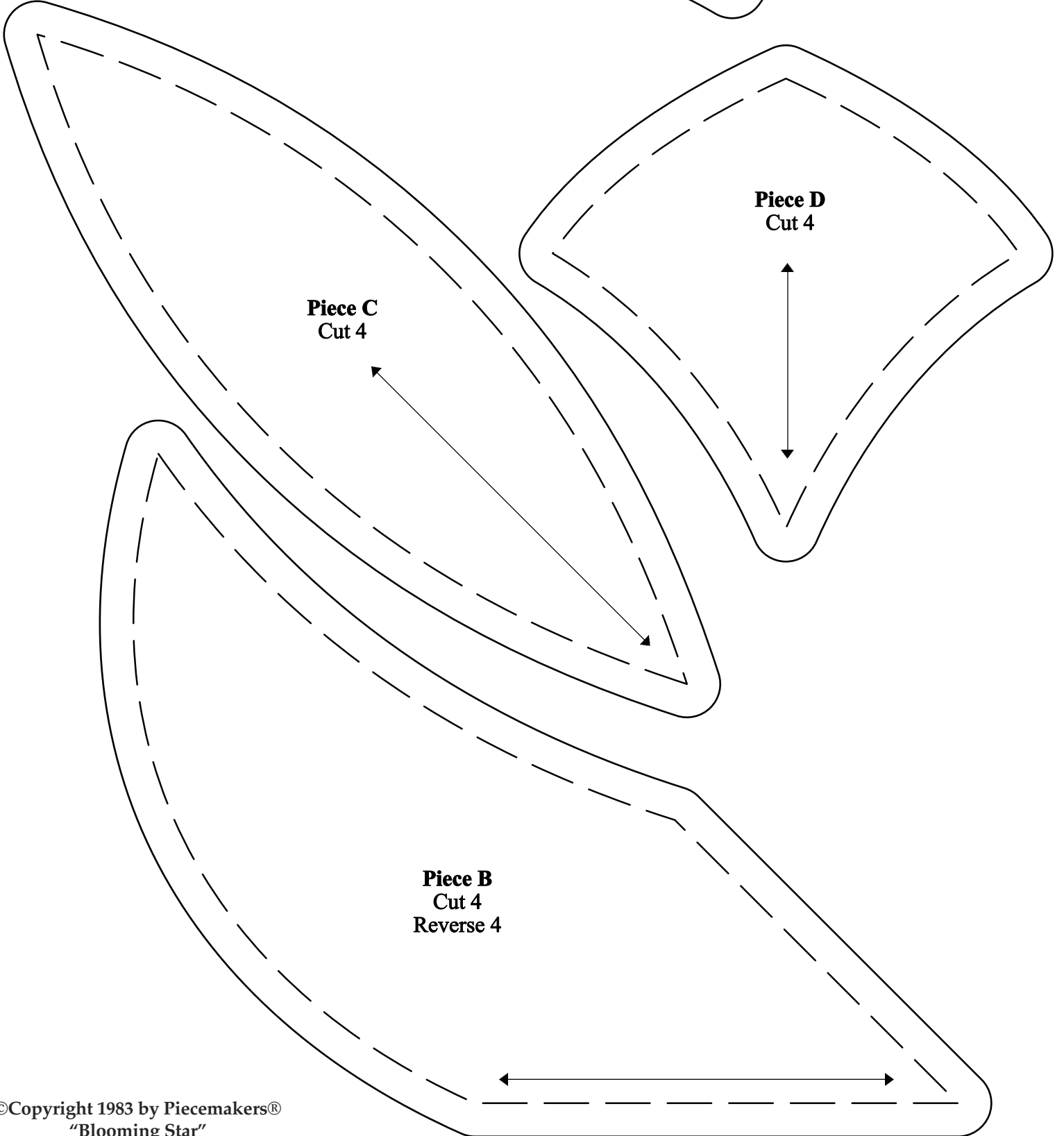
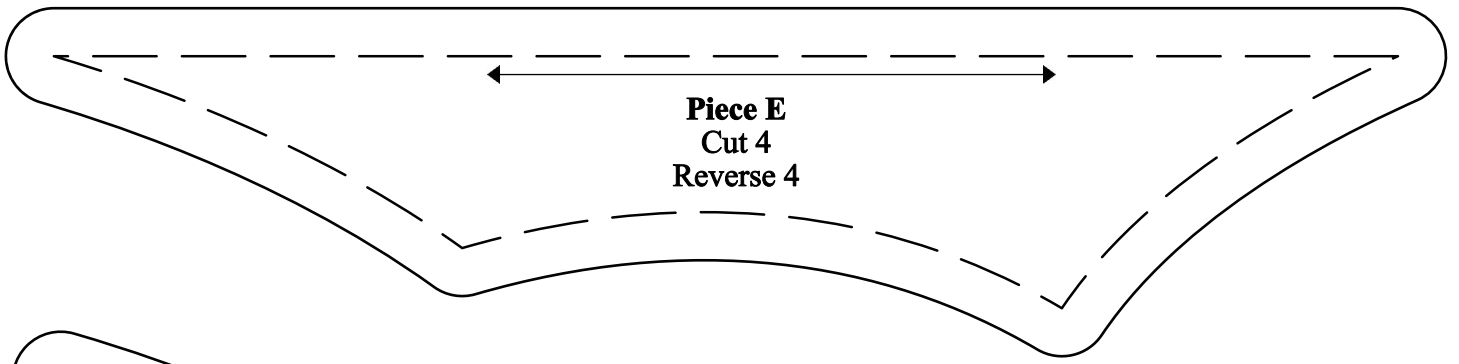


14" finished square



### ***Yardage for Block***

- Background (Piece E) — ¼ yard
- Piece A — ¼ yard OR 7" square
- Piece B — ¼ yard
- Piece C — ⅛ yard
- Piece D — ⅛ yard



**Piece B**  
Cut 4  
Reverse 4

## Directions

1. Trace all lettered pattern pieces on wrong side of fabrics. Trace outside line for machine piecing. Trace inside line for hand piecing and add 1/4" seam allowance outside drawn line.
2. Trace applique pattern piece A on right side of fabric. "Eye" scant 1/4" seam allowance all around and cut out.
3. Piece block following diagrams below.
4. Center piece A on block and applique in place.

